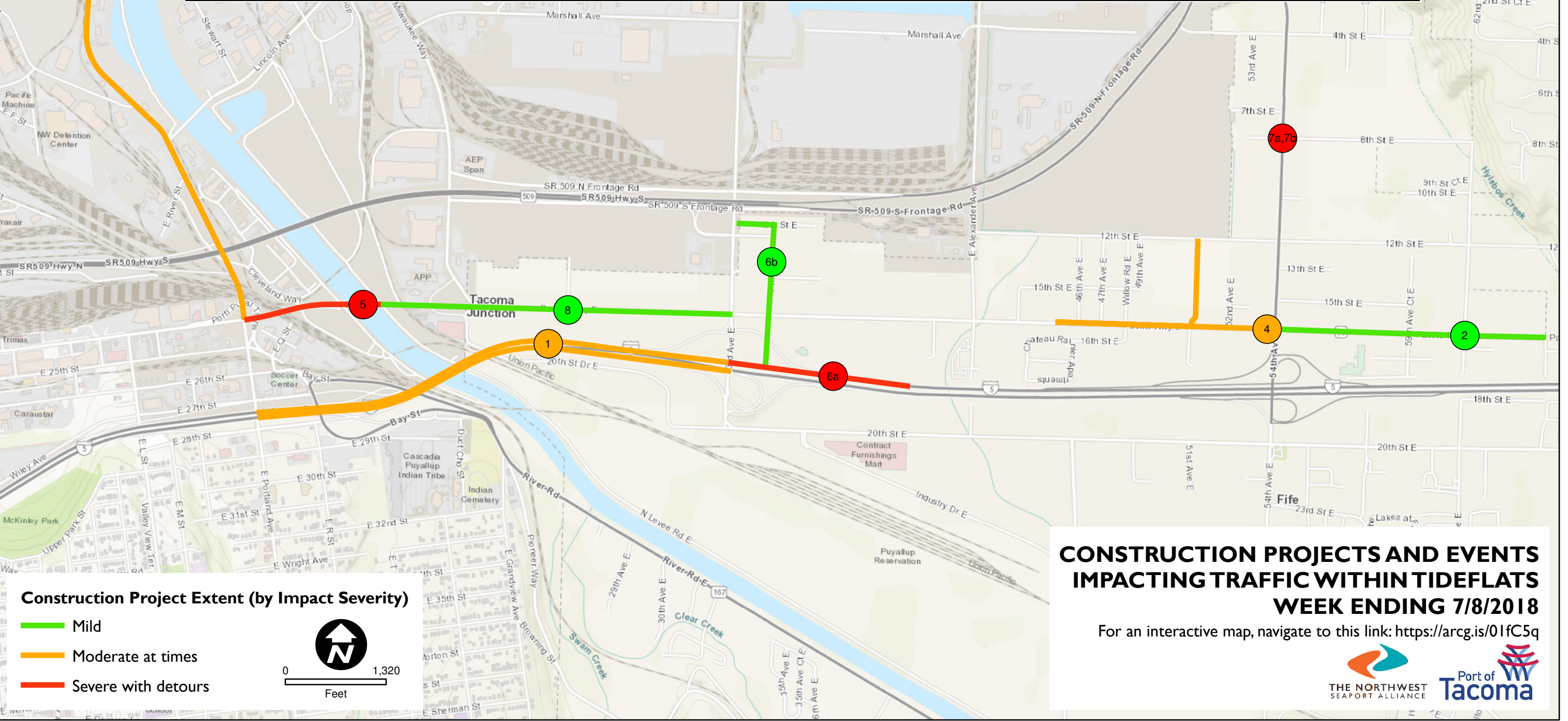


Notes: Project schedules are estimated and are subject to change.
Base Map from Esri's World Topographic map.

Project ID	Project Name	Project Description	Project Organization
1	Construct HOV lanes	Portland Ave to Port of Tacoma road. Work is mostly scheduled at night.	WSDOT
2	SR-99 from 54th Ave to Fife City Limits	Partial Closure - Sidewalk and Street Improvements (mostly evenings and overnight)	WSDOT
3	Warehouse Opens (11th Street)	Adds traffic to Portland Ave & Lincoln Ave.	City of Tacoma
4	54th & Pacific Highway S.	Sidewalk, intersection & street improvements. Evening and night work.	City of Fife
5	Puyallup River Bridge Replacement	Portland Street Bridge Closure. Requires use of detour routes.	City of Tacoma
6a	I-5 to POT Road Interchange Project	Possible major lane and ramp restrictions or closures.	City of Fife
6b	I-5 to POT Road Interchange Project	I-5 to POT Road Interchange Project	City of Fife
7a,7b	54th & 8th Street Improvements	New pump station at NW corner of intersection. Road closed from 7/5-7/9.	City of Fife
8	Pacific Highway Re-pavement Project	Replace pavement and curbs along Pacific Highway.	City of Fife

Document Path: L:\SmallProjects\18_General Projects\180323_0021_TrafficHotSpotConstructionProjects in Tideflats for 2018_WeeklyEnding 20180708.mxd Date Revised: 6/28/2018 by: ktauh



CONSTRUCTION PROJECTS AND EVENTS IMPACTING TRAFFIC WITHIN TIDEFLATS WEEK ENDING 7/8/2018

For an interactive map, navigate to this link: <https://arcgis/01fC5q>

